



The Cycle Touring Association of WA (Inc.) presents

On Your Bike
Heart of the Great Southern
Tour 2021
Saturday 2 - Sunday 10 October 2021

2021 On Your Bike - Heart of the Great Southern Tour - Garment Sizing

Please see the two sizing charts below and read these notes to determine your correct sizing.

1. The Commemorative garment is a sleeveless wind vest similar to the 2017 (Loaves to Fishes) vest.
2. Please check the three measurements closely to ensure correct fit.
3. The Mens garment has a rear flap pocket, the ladies has two side pockets.
4. If Ladies want a rear pocket instead maybe order a Mens size.
5. If Ladies sizing does not suit please look at the Mens sizing.

Brian McAuliffe

Tour Leader

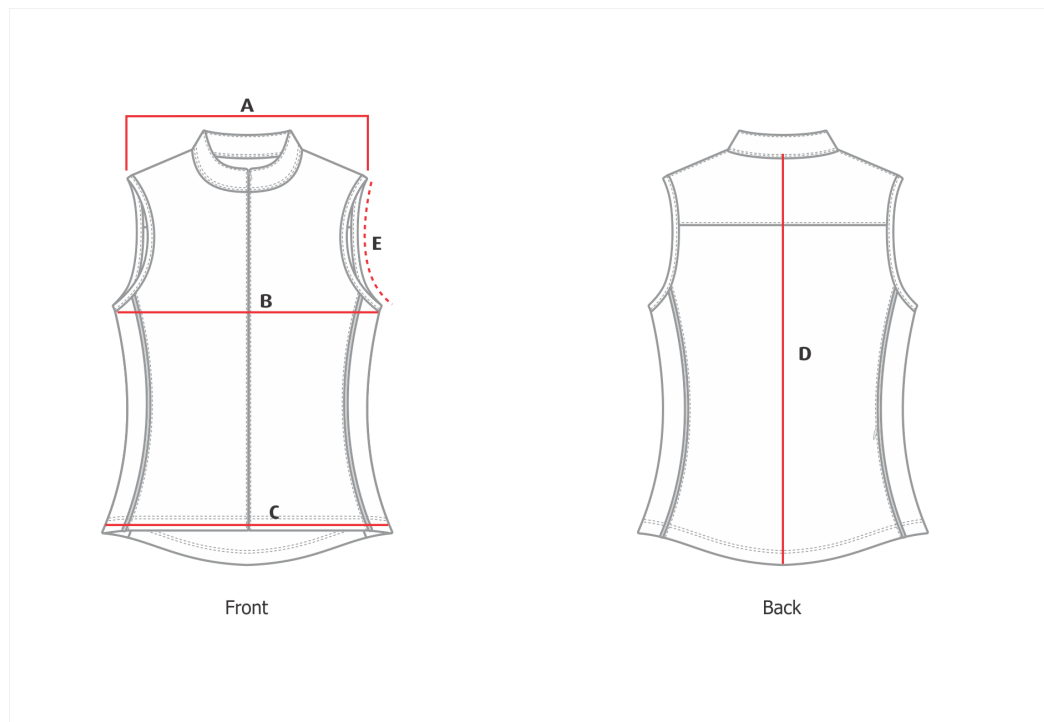
2021 On Your Bike - Heart of the Great Southern Tour

oyb@ctawa.asn.au

GARMENT SPECIFICATION

Pattern 6146 - CYCLING VEST WOMENS ADULT

Monday, October 14, 2019



Measurements in cm

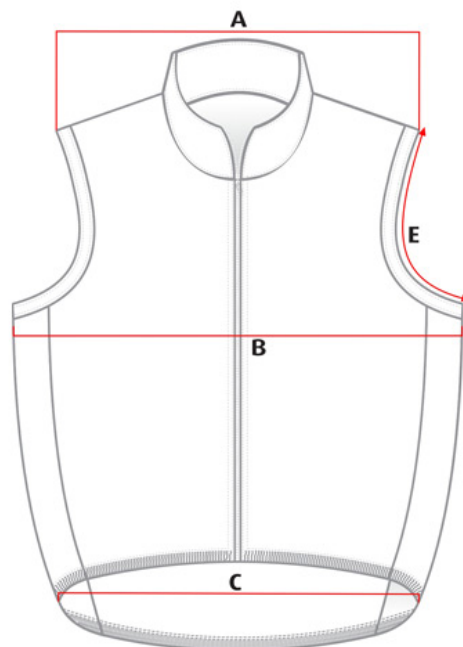
Tolerance +/- cm

	6	8	10	12	14	16	18	20	22	24
B. HALF CHEST	44.0	46.0	48.5	50.5	53.0	55.5	57.5	60.0	62.5	65.0
C. HALF HEM	31.0	34.0	36.5	39.0	41.0	43.0	45.0	48.0	50.0	53.0
D. CENTRE BACK	60.5	62.5	64.5	66.5	68.5	70.5	72.5	74.5	76.5	78.5

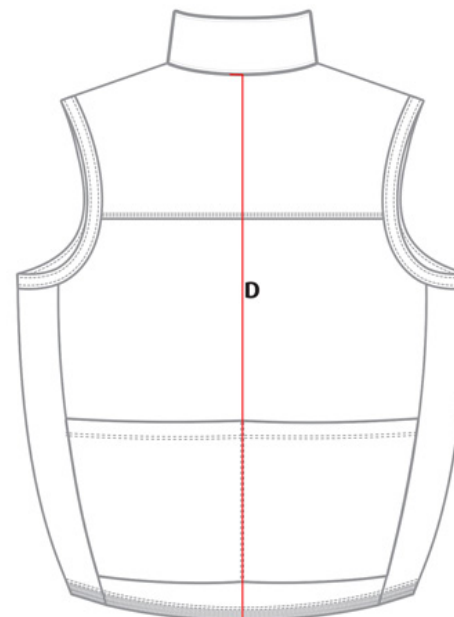
GARMENT SPECIFICATION

Pattern 3052 - CYCLING VEST MENS ADULT

Thursday, June 19, 2014



Front



Back

Measurements in cm

Tolerance +/- cm

	XS	S	M	L	XL	2XL	3XL	4XL	5XL
B. HALF CHEST	48.0	50.0	52.0	54.0	56.0	58.0	60.0	62.0	64.0
C. HALF HEM	36.0	38.0	40.0	42.0	44.0	48.0	50.0	52.0	54.0
D. CENTRE BACK	70.0	72.0	74.0	76.0	78.0	80.0	82.0	84.0	86.0